



BREAKER HILL and CRAIG HILL

FLORA and FAUNA

2009





Bog Asphodel, Tormentil, Cross leaved Heath, Mosses, Fungi, Grasses and Sedges

Craig Hill 10.08.09

Craig Hill and Breaker Hill lie between two areas which have been designated Special Areas of Conservation under the EU Directive on the Conservation of Natural Habitats and of Wild Fauna and Flora (Knockdaw Hill and Aldons Hill - part of the Lendalfoot Hills Complex).

Craig Hill lies on part of the Knockdaw Hill and Knockormal Hill Provisional Wildlife Site and shares many of the upland habitats of the adjoining SSSI's - Calcium-rich springwater-fed fens, dry heath, species rich grassland, very wet mires, and wet heathland with cross-leaved heath.

Part of Craig Hill is a Site of Special Scientific Interest, where a hollow forms what was at one time a small lochan, and is now classified as consisting of a varied sequence of mire types. In addition to species rich communities - including marsh orchids, marsh cinquefoil, and bogbean - common reed and sphagnum mosses dominate locally. Among other birds, reed bunting are to be found here.

Nearby, to the north east, flushed areas support a variety of sedges, cross-leaved heath, tormentil, and large numbers of bog asphodel and grass of Parnassus.

On better drained soils a fine base-rich turf occurs with heath-spotted orchids, wild thyme, common milkwort, harebells and lady's bedstraw. Skylarks are here in good numbers and a variety of butterflies are to be found, including meadow brown, fritillary and dingy skipper.

Both the skylark and reed bunting are on the IUCN* Red List of Birds of High Conservation Concern - both classified as being in rapid decline.

Breaker Hill consists mainly of spruce and larch plantation (including a small loch) which supports good numbers of red squirrels, badgers, and both red and roe deer. The red squirrel has UK Biodiversity Action Plan Priority Species status, and is a protected species under the Wildlife and Countryside Act 1981.

* IUCN - International Union for Conservation of Nature.

CRAIG HILL

FLORA 1

Evidence found on survey 15.06.09

Water Avens
 Bogbean
 Marsh Cinquefoil
 Marsh Orchid
 Heath Spotted-Orchid
 Ragged Robin
 Lesser Spearwort
 Water Forgetmenot
 Bog Asphodel
 Water Horsetail
 Cottongrass
 Cuckoo Flower
 Cross-leaved Heath
 Bell Heather
 Heather
 Birdsfoot trefoil
 Hop trefoil
 Tormentil
 Common Milkwort
 Heath Bedstraw
 Thyme-leaved Speedwell
 Daisy
 Eyebright
 Lousewort
 White Clover
 Bog Myrtle
 Bracken
 Marsh Thistle
 Soft Rush
 Sorrel
 Purple Moor Grass
 Mat Grass
 Grey Willow

Geum rivale
Menyanthes trifoliata
Potentilla palustris
Orchis strictifolia
Dactylorhiza maculata
Lychnis flos-cuculii
Ranunculus flammula
Myosotis scorpioides
Narthecium ossifragum
Equisetum fluviatile
Eriophorum angustifolium
Cardamine pratense
Erica tetralix
Erica cinerea
Calluna vulgaris
Lotus corniculatus
Trifolium campestre
Potentilla erecta
Polygala vulgaris
Galium saxatile
Veronica serpyllifolia
Bellis perennis
Euphrasia officinalis
Pedicularis sylvatica
Trifolium repens
Myrica gale
Pteridium aquilinum
Cirsium palustre
Juncus effusus
Rumex acetosa
Molina caerulea
Nardus stricta
Salix atrocinerea

Grasses and sedges
 Mosses, lichens and liverworts



Marsh Cinquefoil



Milkwort



Bog Asphodel



Marsh Orchid



Water Avens



Bogbean



Heath Spotted-Orchid



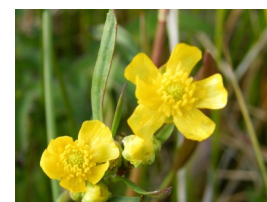
Sorrel



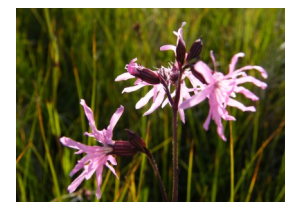
Sedge and Water Horsetail



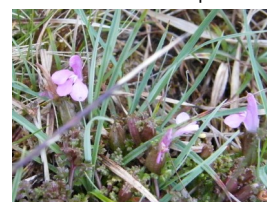
Bog Myrtle



Lesser Spearwort



Ragged Robin



Lousewort



Bell Heather



Bog Asphodel, Star Sedge, Cross-leaved Heath, Heather and Grasses

Craig Hill 09.07.09

CRAIG HILL

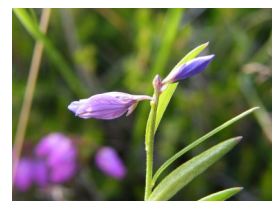
FLORA 2

Evidence found on survey 09.07.09

Water Avens	<i>Geum rivale</i>
Bogbean	<i>Menyanthes trifoliata</i>
Marsh Cinquefoil	<i>Potentilla palustris</i>
Marsh Orchid	<i>Orchis strictifolia</i>
Heath Spotted-Orchid	<i>Dactylorhiza maculata</i>
Ragged Robin	<i>Lychnis flos-cuculii</i>
Lesser Spearwort	<i>Ranunculus flammula</i>
Water Forgetmenot	<i>Myosotis scorpioides</i>
Bog Asphodel	<i>Narthecium ossifragum</i>
Water Horsetail	<i>Equisetum fluviatile</i>
Cottongrass	<i>Eriophorum angustifolium</i>
Cuckoo Flower	<i>Cardamine pratense</i>
Cross-leaved Heath	<i>Erica tetralix</i>
Bell Heather	<i>Erica cinerea</i>
Heather	<i>Calluna vulgaris</i>
Birdsfoot trefoil	<i>Lotus corniculatus</i>
Hop trefoil	<i>Trifolium campestre</i>
Tormentil	<i>Potentilla erecta</i>
Common Milkwort	<i>Polygala vulgaris</i>
Heath Bedstraw	<i>Galium saxatile</i>
Lady's Bedstraw	<i>Galium verum</i>
Marsh Bedstraw	<i>Galium palustre</i>
Thyme-leaved Speedwell	<i>Veronica serpyllifolia</i>
Daisy	<i>Bellis perennis</i>
Eyebright	<i>Euphrasia officinalis</i>
Lousewort	<i>Pedicularis sylvatica</i>
White Clover	<i>Trifolium repens</i>
Coltsfoot	<i>Tussilago farfara</i>
Bog Myrtle	<i>Myrica gale</i>
Bracken	<i>Pteridium aquilinum</i>
Marsh Thistle	<i>Cirsium palustre</i>
Soft Rush	<i>Juncus effusus</i>
Sorrel	<i>Rumex acetosa</i>
Harebell	<i>Campanula rotundifolia</i>
Wild Thyme	<i>Thymus serpyllum</i>
Slender St. John's-wort	<i>Hypericum pulchrum</i>
Sneezewort	<i>Achillea ptarmica</i>
Yarrow	<i>Achillea millefolium</i>
Angelica	<i>Angelica sylvestris</i>
Meadowsweet	<i>Filipendula ulmaria</i>
Self-heal	<i>Prunella vulgaris</i>
Marsh Pennywort	<i>Hydrocotyle vulgaris</i>
Sea Plantain	<i>Plantago maritima</i>
Purple Moor Grass	<i>Molinia caerulea</i>
Mat Grass	<i>Nardus Stricta</i>
Cottongrass	<i>Eriophorum angustifolium</i>
Star Sedge	<i>Carex echinata</i>



Marsh Cinquefoil



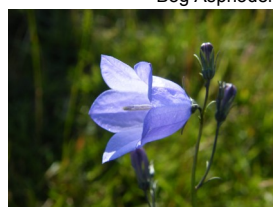
Milkwort



Bog Asphodel



Cross-leaved Heath



Harebell



Tormentil



Wild Thyme



Slender St John's-wort



Meadowsweet



Sea Plantain



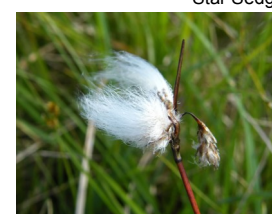
Lady's Bedstraw



Star Sedge



Self-heal



Cottongrass

Mosses, lichens and liverworts

All photographs taken on Craig Hill 09.07.09. HE



Northern Marsh Orchid, Common Reed, Bogbean, Grasses and Sedges

Craig Hill SSSI 15.06.09

CRAIG HILL

FLORA 3

Evidence found on survey 10.08.09

Grass of Parnassus
 Bistort
 Devilsbit Scabious
 Skullcap
 Dovesfoot Cranesbill
 Field Mouse-ear
 Autumn Hawkbit
 Angelica
 Common Reed
 Heather
 Yarrow
 Harebell
 Bracken
 Marsh Cinquefoil
 Lichen
 Silverweed
 Marsh Willowherb
 White Clover
 Meadowsweet

Parnassia palustris
Polygonum bistorta
Succisa pratensis
Scutellaria galericulata
Geranium molle
Cerastium arvense
Leontodon autumnalis
Angelica sylvestris
Phragmites australis
Calluna vulgaris
Achillea millefolium
Campanula rotundifolia
Pteridium aquilinum
Potentilla palustris
Usnea subfloridana
Potentilla anserina
Epilobium palustre
Trifolium repens
Filipendula ulmaria

Grasses, sedges,
 Mosses, lichens, fungi and liverworts



Grass of Parnassus



Bistort



Hawkbit



Devilsbit Scabious



Angelica



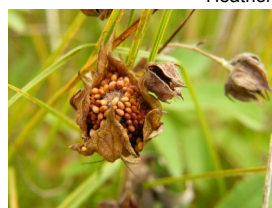
Common Reed



Heather



Yarrow



Marsh Cinquefoil



Usnea subfloridana



Skullcap



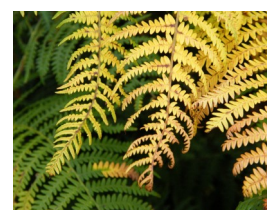
Harebell



Wild Angelica and Common Reed Craig Hill SSSI



Silverweed



Bracken



Grass of Parnassus, Devilsbit Scabious, Bog Asphodel, Sedges, Grasses and Hoverfly Craig Hill 09.09.09

CRAIG HILL

FLORA 4

Evidence found on survey 21.08.09

Grass of Parnassus
 Dovesfoot Cranesbill
 Devilsbit Scabious
 Heather
 Cross-leaved Heath
 Bell Heather
 Yarrow
 Harebell
 Self-heal
 Lichen
 Marsh Willowherb
 Eyebright
 Wild Thyme
 Butterwort
 Rowan
 Field Mouse-ear
 Marsh Ragwort
 Water Horsetail
 Marsh Thistle
 Autumn Hawkbit
 Sneezewort
 White Clover
 Daisy
 Angelica
 Common Reed
 Bracken
 Soft Rush
 Meadowsweet
 Marsh Pennywort

Parnassia palustris
Geranium molle
Succisa pratensis
Calluna vulgaris
Erica tetralix
Erica cinerea
Achillea millefolium
Campanula rotundifolia
Prunella vulgaris
Usnea subfloridana
Epilobium palustre
Euphrasia officianalis
Thymus serpyllum
Pinguicula vulgaris
Sorbus aucuparia
Cerastium arvense
Senecio aquaticus
Equisetum fluviatile
Cirsium palustre
Leontodon autumnalis
Achillea ptarmica
Trifolium repens
Bellis perennis
Angelica sylvestris
Phragmites australis
Pteridium aquilinum
Juncus effusus
Filipendula ulmaria
Hydrocotyle vulgaris

Grasses and sedges
 Mosses, lichens, fungi and liverworts



Grass of Parnassus



Devilsbit Scabious



Dovesfoot Cranesbill



Eyebright



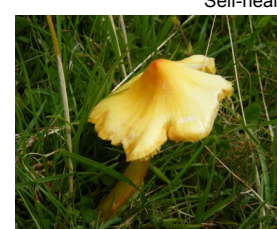
Harebell



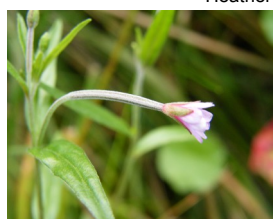
Self-heal



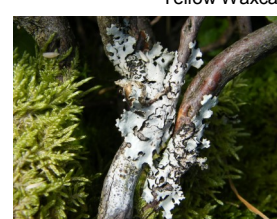
Heather



Yellow Waxcap



Marsh Willowherb



Lichen



Butterwort



Field Mouse-ear



Rowan



Marsh Ragwort



Craig Hill Wheatear on rocks near the summit 15.06.09

CRAIG HILL FAUNA



Meadow Brown 09.07.09



Fritillary 09.07.09



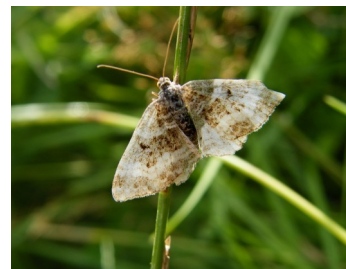
Common Green Grasshopper



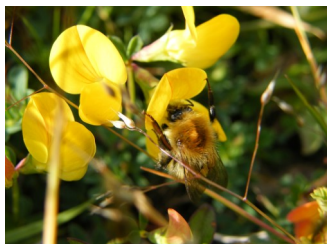
Wheatear 15.06.09



Brown Hare 15.06.09



Dingy Skipper 10.08.09



Carder bee 15.06.09



Skylark soaring 15.06.09



Small White 10.08.09



Reed Bunting 15.06.09



Raven 10.08.09



Reed Bunting 15.06.09



Young frog 15.06.09



Sheep 15.06.09



Hoverfly 10.08.09

BREAKER HILL FLORA and FAUNA

Evidence found on survey 20.04.09

The Glen - Broadleaved Woodland

Primrose	<i>primula vulgaris</i>			
Dog violet	<i>viola riviniana</i>			
Foxglove	<i>digitalis purpurea</i>			
Wood Sorrel	<i>oxalis acetosella</i>			
Wild Strawberry	<i>fragaria vesca</i>			
Townhall Clock	<i>adoxa moschatellina</i>			
Lesser Celandine	<i>ranunculus ficaria</i>			
Broad Buckler Fern	<i>dryopteris dilatata</i>			
Hard Fern	<i>blechnum spicant</i>			
Hart's tongue fern	<i>asplenium scolopendrium</i>			
Dog's Mercury	<i>mercurialis perennis</i>			
Herb Robert	<i>geranium robertianum</i>			
Herb Bennet	<i>geum urbanum</i>			
Hawthorn	<i>crataegus monogyna</i>			
Hazel	<i>corylus avellana</i>			
Bluebell	<i>endemion non-scriptus</i>			
Goat Willow	<i>salix caprea</i>			
Ramsons	<i>allium ursinum</i>			
Coltsfoot	<i>tussilago farfara</i>			
Ivy	<i>hedera helix</i>			
Silver Birch	<i>betula pendula</i>			
Ash	<i>fraxinus excelsior</i>			
Oak	<i>quercus robur</i>			
Elm	<i>ulmus glabra</i>			
Sycamore	<i>acer pseudoplatanus</i>			
Elder	<i>sambucus nigra</i>			
Dog Rose	<i>rosa canina</i>			
Angelica	<i>angelica sylvestris</i>			
Bramble	<i>rubus fruticosus</i>			
Golden Saxifrage	<i>chrysosplenium oppositifolium</i>			
Red Campion	<i>silene dioica</i>			
Creeping Buttercup	<i>ranunculus repens</i>			
Dandelion	<i>taraxacum vulgaria</i>			
Stinging Nettle	<i>urtica dioica</i>			
Gooseberry	<i>ribes uva-crispa</i>			
Soft Rush	<i>juncus effusus</i>			

BREAKER HILL FLORA and FAUNA

Evidence found on survey 20.04.09

Conifer Woodland

European Larch	<i>larix decidua</i>
Sitka Spruce	<i>picea sitchensis</i>
Silver Birch	<i>betula pendula</i>
Rowan	<i>sorbus aucuparia</i>
Goat Willow	<i>salix caprea</i>
Bracken	<i>pteridium aquilinum</i>
Heather	<i>calluna vulgaris</i>
Bell heather	<i>erica cinerea</i>
Whin	<i>ulex europaeus</i>
Foxglove	<i>digitalis purpurea</i>
Thyme	<i>thymus drucei</i>
Horsetail	<i>equisetum arvense</i>
Wood anenome	<i>anenome nemorosa</i>
Broadleaved pondweed	<i>potamogeton natans</i>
Watermint	<i>mentha aquatica</i>
Sphagnum moss	<i>sphagnum subnitens</i>
Lichens, liverworts and mosses	

Badger	<i>meles meles</i>
Brown Hare	<i>lepus europaeus</i>
Red deer	<i>cervus elaphus</i>
Roe deer	<i>capreolus capreolus</i>
Red squirrel	<i>scirius vulgaris</i>
Fox	<i>vulpes vulpes</i>

Buzzard	<i>buteo buteo</i>
Raven	<i>corvus corax</i>
Moorhen	<i>gallinula chloropus</i>
Bluetit	<i>parus caeruleus</i>

Smooth Newt	<i>lissotriton vulgaris</i>
Waterboatman	<i>notonecta glauca</i>
Whirligig beetle	<i>gyrinus natador</i>
Great diving beetle	<i>dytiscus marginalis</i>
Black ground beetle	<i>feronia nigrita</i>



Larch



Spruce



Whin



Wood Anemone



Bracken



Rowan



Moss



Hare



Red squirrel - hazel nut



Red deer tracks



Red squirrel - spruce cones



Bell heather



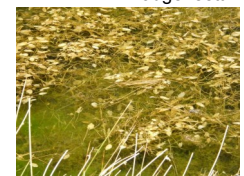
Fox droppings



Badger sett



Waterboatman



Broadleaved pondweed

BREAKER HILL

Mosses



Flowering plant species of Breaker Hill and Craig Hill

Alchemilla vulgaris agg.
Alder (*Alnus glutinosa*)
Annual Meadow-grass (*Poa annua*)
Annual Pearlwort (*Sagina apetala*)
Ash (*Fraxinus excelsior*)
Aspen (*Populus tremula*)
Barren Strawberry (*Potentilla sterilis*)
Bearded Couch (*Elymus caninus*)
Beech (*Fagus sylvatica*)
Bell Heather (*Erica cinerea*)
Bilberry (*Vaccinium myrtillus*)
Bitter-vetch (*Lathyrus linifolius*)
Blackthorn (*Prunus spinosa*)
Bluebell (*Hyacinthoides non-scripta*)
Bog Asphodel (*Narthecium ossifragum*)
Bog Pondweed (*Potamogeton polygonifolius*)
Bog Stitchwort (*Stellaria alsine*)
Bog-myrtle (*Myrica gale*)
Bog-sedge (*Carex limosa*)
Bogbean (*Menyanthes trifoliata*)
Bottle Sedge (*Carex rostrata*)
Bramble (*Rubus fruticosus* agg.)
Broad-leaved Cottongrass (*Eriophorum latifolium*)
Broad-leaved Dock (*Rumex obtusifolius*)
Broad-leaved Pondweed (*Potamogeton natans*)
Broom (*Cytisus scoparius*)
Brown Sedge (*Carex disticha*)
Bugle (*Ajuga reptans*)
Burdock (*Arctium*)
Butterbur (*Petasites hybridus*)
Cleavers (*Galium aparine*)
Cock's-foot (*Dactylis glomerata*)
Colt's-foot (*Tussilago farfara*)
Columbine (*Aquilegia vulgaris*)
Common Bent (*Agrostis capillaris*)
Common Bird's-foot-trefoil (*Lotus corniculatus*)
Common Butterwort (*Pinguicula vulgaris*)
Common Chickweed (*Stellaria media*)
Common Club-rush (*Schoenoplectus lacustris*)
Common Cottongrass (*Eriophorum angustifolium*)
Common Couch (*Elytrigia repens*)
Common Dog-violet (*Viola riviniana*)
Common Field-speedwell (*Veronica persica*)
Common Figwort (*Scrophularia nodosa*)
Common Ivy (*Hedera helix* subsp. *helix*)
Common Knapweed (*Centaurea nigra*)

Common Marsh-bedstraw (*Galium palustre* subsp. *palustre*)
Common Milkwort (*Polygala vulgaris*)
Common Mouse-ear (*Cerastium fontanum*)
Common Nettle (*Urtica dioica*)
Common Reed (*Phragmites australis*)
Common Sedge (*Carex nigra*)
Common Slender Eyebright (*Euphrasia micrantha*)
Common Sorrel (*Rumex acetosa*)
Common Spotted-orchid (*Dactylorhiza fuchsii*)
Common Yellow-sedge (*Carex viridula* subsp. *oedocarpa*)
Creeping Bent (*Agrostis stolonifera*)
Creeping Buttercup (*Ranunculus repens*)
Creeping Cinquefoil (*Potentilla reptans*)
Cross-leaved Heath (*Erica tetralix*)
Cuckooflower (*Cardamine pratensis*)
Daisy (*Bellis perennis*)
Devil's-bit Scabious (*Succisa pratensis*)
Dog's Mercury (*Mercurialis perennis*)
Dog-rose (*Rosa canina*)
Early-purple Orchid (*Orchis mascula*)
Elder (*Sambucus nigra*)
Enchanter's-nightshade (*Circaea lutetiana*)
Festuca ovina agg.
Festuca rubra agg.
Feverfew (*Tanacetum parthenium*)
Field Forget-me-not (*Myosotis arvensis*)
Flea Sedge (*Carex pulicaris*)
Goat Willow (*Salix caprea*)
Gorse (*Ulex europaeus*)
Grass-of-Parnassus (*Parnassia palustris*)
Greater Bird's-foot-trefoil (*Lotus pedunculatus*)
Greater Plantain (*Plantago major*)
Greater Stitchwort (*Stellaria holostea*)
Greater Tussock-sedge (*Carex paniculata*)
Ground-elder (*Aegopodium podagraria*)
Groundsel (*Senecio vulgaris*)
Harebell (*Campanula rotundifolia*)
Hawkweed (*Hieracium*)
Hawthorn (*Crataegus monogyna*)
Hazel (*Corylus avellana*)
Heath Bedstraw (*Galium saxatile*)
Heath Dog-violet (*Viola canina*)
Heath Milkwort (*Polygala serpyllifolia*)
Heath Pearlwort (*Sagina subulata*)
Heath Speedwell (*Veronica officinalis*)
Heath Spotted-orchid (*Dactylorhiza maculata*)
Heather (*Calluna vulgaris*)
Herb-Robert (*Geranium robertianum*)
Hogweed (*Heracleum sphondylium*)
Holly (*Ilex aquifolium*)

Honeysuckle (*Lonicera periclymenum*)
Hop Trefoil (*Trifolium campestre*)
Ivy (*Hedera helix*)
Jointed Rush (*Juncus articulatus*)
Kidney Vetch (*Anthyllis vulneraria*)
Knotgrass (*Polygonum aviculare*)
Lady's Bedstraw (*Galium verum*)
Lesser Burdock (*Arctium minus*)
Lesser Celandine (*Ranunculus ficaria*)
Lesser Pond-sedge (*Carex acutiformis*)
Lesser Spearwort (*Ranunculus flammula*)
Lesser Stitchwort (*Stellaria graminea*)
Lousewort (*Pedicularis sylvatica*)
Marsh Cinquefoil (*Potentilla palustris*)
Marsh Pennywort (*Hydrocotyle vulgaris*)
Marsh Thistle (*Cirsium palustre*)
Marsh-bedstraw (*Galium palustre*)
Marsh-marigold (*Caltha palustris*)
Mat-grass (*Nardus stricta*)
Meadow Buttercup (*Ranunculus acris*)
Meadow Crane's-bill (*Geranium pratense*)
Meadow Fescue (*Festuca pratensis*)
Meadow Foxtail (*Alopecurus pratensis*)
Meadowsweet (*Filipendula ulmaria*)
Moschatel (*Adoxa moschatellina*)
Mossy Saxifrage (*Saxifraga hypnoides*)
Northern Marsh-orchid (*Dactylorhiza purpurella*)
Opposite-leaved Golden-saxifrage (*Chrysosplenium oppositifolium*)
Pedunculate Oak (*Quercus robur*)
Perennial Rye-grass (*Lolium perenne*)
Perennial Sow-thistle (*Sonchus arvensis*)
Pineappleweed (*Matricaria discoidea*)
Plantago major subsp. major
Primrose (*Primula vulgaris*)
Purple Moor-grass (*Molinia caerulea*)
Quaking-grass (*Briza media*)
Quercus petraea x *robur* = *Q. x rosacea*
Ragged-Robin (*Lychnis flos-cuculi*)
Ramsons (*Allium ursinum*)
Red Campion (*Silene dioica*)
Reed Canary-grass (*Phalaris arundinacea*)
Rosa canina agg.
Rough Meadow-grass (*Poa trivialis*)
Rowan (*Sorbus aucuparia*)
Rumex acetosella subsp. acetosella
Salix cinerea
Sea Plantain (*Plantago maritima*)
Selfheal (*Prunella vulgaris*)
Sharp-flowered Rush (*Juncus acutiflorus*)
Sheep's Sorrel (*Rumex acetosella*)

Shepherd's-purse (*Capsella bursa-pastoris*)
 Silver Birch (*Betula pendula*)
 Silverweed (*Potentilla anserina*)
 Slender St John's-wort (*Hypericum pulchrum*)
 Small Toadflax (*Chaenorhinum minus*)
 Sneezewort (*Achillea ptarmica*)
 Soft-rush (*Juncus effusus*)
 Spear Thistle (*Cirsium vulgare*)
 Spiked Sedge (*Carex spicata*)
 Squirreltail Fescue (*Vulpia bromoides*)
 Star Sedge (*Carex echinata*)
 Sweet Violet (*Viola odorata*)
 Sycamore (*Acer pseudoplatanus*)
 Tall Fescue (*Festuca arundinacea*)
 Thyme-leaved Speedwell (*Veronica serpyllifolia*)
 Tormentil (*Potentilla erecta*)
 Viola canina subsp. canina
 Viola palustris subsp. palustris
 Water Avens (*Geum rivale*)
 Water Forget-me-not (*Myosotis scorpioides*)
 Water Mint (*Mentha aquatica*)
 Water-cress (*Rorippa nasturtium-aquaticum*)
 White Clover (*Trifolium repens*)
 Wild Angelica (*Angelica sylvestris*)
 Wild Cherry (*Prunus avium*)
 Wild Strawberry (*Fragaria vesca*)
 Wild Thyme (*Thymus polytrichus*)
 Wood Anemone (*Anemone nemorosa*)
 Wood Avens (*Geum urbanum*)
 Wych Elm (*Ulmus glabra*)
 Yarrow (*Achillea millefolium*)

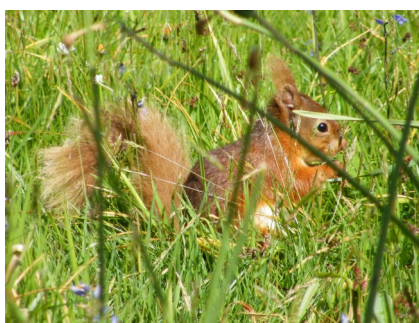


Grass of Parnassus

Craig Hill

Mammal Species of Breaker Hill and Craig Hill

Bank Vole (*Clethrionomys glareolus*)
Black Rat (*Rattus rattus*)
Brown Hare (*Lepus europaeus*)
Brown Rat (*Rattus norvegicus*)
Eurasian Badger (*Meles meles*)
Eurasian Common Shrew (*Sorex araneus*)
Eurasian Red Squirrel (*Sciurus vulgaris*)
European Mole (*Talpa europaea*)
European Rabbit (*Oryctolagus cuniculus*)
European Water Vole (*Arvicola terrestris*)
Field Vole (*Microtus agrestis*)
Long-eared Bat species (*Plecotus*)
Mountain Hare (*Lepus timidus*)
Pipistrellus pipistrellus sensu lato
Red Deer (*Cervus elaphus*)
Red Fox (*Vulpes vulpes*)
Roe Deer (*Capreolus capreolus*)
Stoat (*Mustela erminea*)
Weasel (*Mustela nivalis*)
West European Hedgehog (*Erinaceus europaeus*)
Wood Mouse (*Apodemus sylvaticus*)



Red Squirrel, near Craig Wood 22.05.09



Red Deer, edge of Breaker Hill 23.04.09

Bird species recorded on Breaker Hill and Craig Hill

Black-headed Gull (*Larus ridibundus*)
Blackcap (*Sylvia atricapilla*)
Blackbird (*Turdus merula*)
Blue Tit (*Cyanistes caeruleus*)
Buzzard (*Buteo buteo*)
Carrion Crow (*Corvus corone*)
Chaffinch (*Fringilla coelebs*)
Chiffchaff (*Phylloscopus collybita*)
Coal Tit (*Periparus ater*)
Common Cuckoo (*Cuculus canorus*)
Common Pheasant (*Phasianus colchicus*)
Common Snipe (*Gallinago gallinago*)
Common Starling (*Sturnus vulgaris*)
Curlew (*Numenius arquata*)
Duncock (*Prunella modularis*)
Garden Warbler (*Sylvia borin*)
Goldcrest (*Regulus regulus*)
Goldfinch (*Carduelis carduelis*)
Great Tit (*Parus major*)
Greenfinch (*Carduelis chloris*)
Jackdaw (*Corvus monedula*)
Jay (*Garrulus glandarius*)
Hen Harrier (*Circus cyaneus*)
Herring Gull (*Larus argentatus*)
Kestrel (*Falco tinnunculus*)
Lesser Black-backed Gull (*Larus fuscus*)
Linnet (*Carduelis cannabina*)
Magpie (*Pica pica*)
Meadow Pipit (*Anthus pratensis*)
Mistle Thrush (*Turdus viscivorus*)
Moorhen (*Gallinula chloropus*)
Northern Lapwing (*Vanellus vanellus*)
Peregrine Falcon (*Falco peregrinus*)
Pied Flycatcher (*Ficedula hypoleuca*)
Raven (*Corvus corax*)
Redwing (*Turdus iliacus*)
Reed Bunting (*Emberiza schoeniclus*)
Robin (*Erithacus rubecula*)
Rook (*Corvus frugilegus*)
Sedge Warbler (*Acrocephalus schoenobaenus*)
Siskin (*Carduelis spinus*)
Sparrowhawk (*Accipiter nisus*)
Trecreeper (*Certhia familiaris*)

Sky Lark (*Alauda arvensis*)
Song Thrush (*Turdus philomelos*)
Spotted Flycatcher (*Muscicapa striata*)
Starling (*Sturnus vulgaris*)
Stonechat (*Saxicola torquata*)
Swallow (*Hirundo rustica*)
Tawny Owl (*Strix aluco*)
Tree Pipit (*Anthus trivialis*)
Wheatear (*Oenanthe oenanthe*)
Whinchat (*Saxicola rubetra*)
Willow Warbler (*Phylloscopus trochilus*)
Wren (*Troglodytes troglodytes*)
Wood Pigeon (*Columba palumbus*)

Red Listed Species:

Cuckoo
Hen Harrier
Linnet
Reed Bunting
Skylark
Song Thrush
Spotted Flycatcher

Not recorded but likely to be found on site as have been recorded on
Lendalfoot Hills Complex SAC:

Barn Owl (*Tyto alba*)
Black Grouse (*Tetrao tetrix*)
Fieldfare (*Turdus pilaris*)
Great Spotted Woodpecker (*Dendrocopos major*)
Grey Heron (*Ardea cinerea*)
Lapwing (*Vanellus vanellus*)
Long-tailed Tit (*Aegithalos caudatus*)
Merlin (*Falco columbarius*)
Nightjar (*Caprimulgus europaeus*)
Woodcock (*Scolopax rusticola*)
Wood Warbler (*Phylloscopus sibilatrix*)



Lady's Bedstraw, Bell Heather, Heather, Tormentil, Milkwort and Grasses

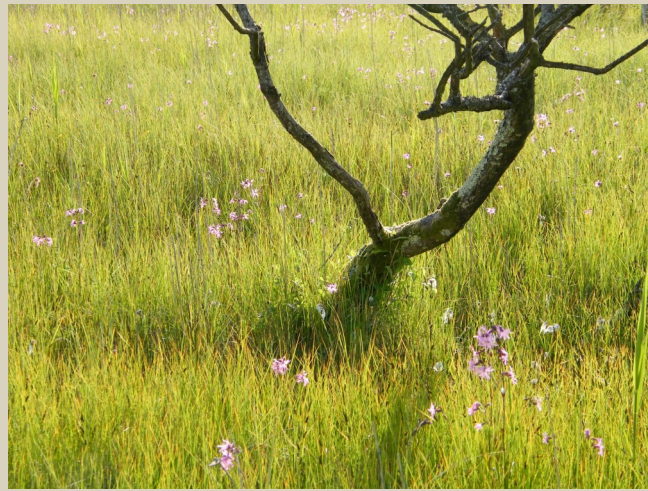
Craig Hill

09.07.09



CRAIG HILL
PINWHERRY
FLORA AND FAUNA

Wheatear on rocks near summit



Craig Hill SSSI



Ragged Robin



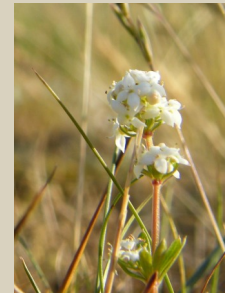
Wheatear



Marsh Orchid



Water Avens



Heath Bedstraw



Marsh Cinquefoil



Heath Spotted Orchid



Grasses and Horsetail



Moss



Cuckoo Flower



Bell Heather



Bogbean



Bog Asphodel



Heath Spotted Orchid



Spring



Milkwort

All photographs
taken 15.06.09
H.E.